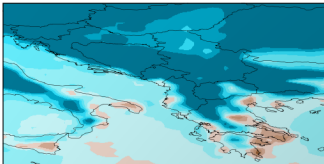
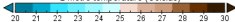


## 2 metre temperature (ERA5)

Original GRIB coordinate for key: date(date): 19400701



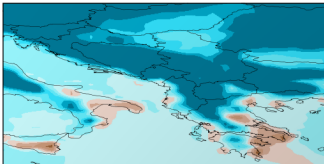
## 2 metre temperature (Celsius)



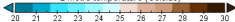
Data Min = -68, Max = 38

## 2 metre temperature (ERA5)

Original GRIB coordinate for key: date(date): 19410701



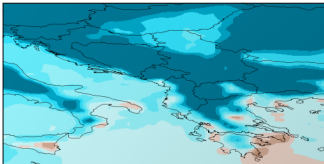
2 metre temperature (Celsius)



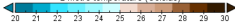
Data Min = -65, Max = 40

## 2 metre temperature (ERA5)

Original GRIB coordinate for key: date(date): 19420701



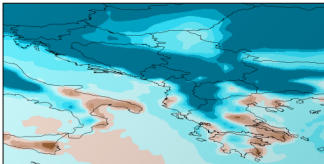
2 metre temperature (Celsius)



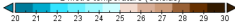
Data Min = -72, Max = 40

## 2 metre temperature (ERA5)

Original GRIB coordinate for key: date(date): 19430701



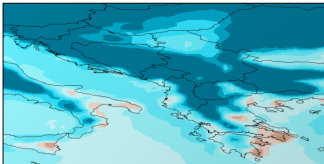
2 metre temperature (Celsius)



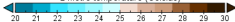
Data Min = -71, Max = 41

## 2 metre temperature (ERA5)

Original GRIB coordinate for key: date(date): 19440701



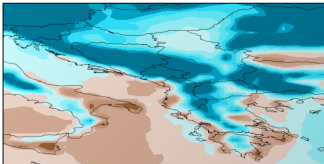
2 metre temperature (Celsius)



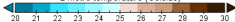
Data Min = -70, Max = 30

## 2 metre temperature (ERA5)

Original GRIB coordinate for key: date(date): 19450701



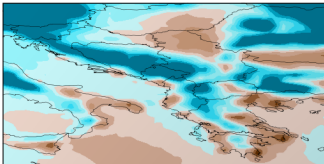
2 metre temperature (Celsius)



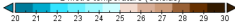
Data Min = -65, Max = 40

## 2 metre temperature (ERA5)

Original GRIB coordinate for key: date(date): 19460701



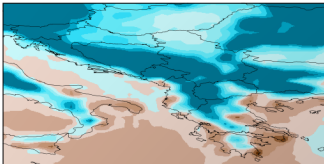
2 metre temperature (Celsius)



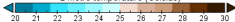
Data Min = -65, Max = 40

## 2 metre temperature (ERA5)

Original GRIB coordinate for key: date(date): 19470701



## 2 metre temperature (Celsius)

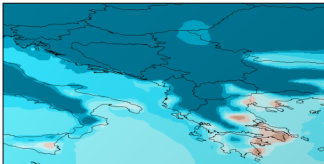


Data Min = -65, Max = 40

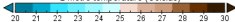


## 2 metre temperature (ERA5)

Original GRIB coordinate for key: date(date): 19480701



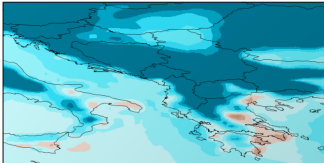
2 metre temperature (Celsius)



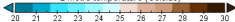
Data Min = -68, Max = 40

## 2 metre temperature (ERA5)

Original GRIB coordinate for key: date(date): 19490701



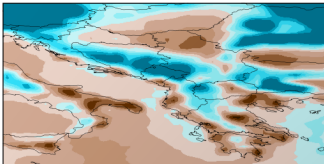
2 metre temperature (Celsius)



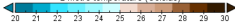
Data Min = -62, Max = 38

## 2 metre temperature (ERA5)

Original GRIB coordinate for key: date(date): 19500701



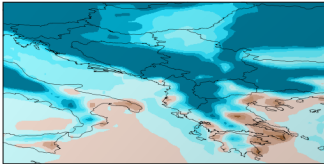
## 2 metre temperature (Celsius)



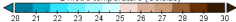
Data Min = -68, Max = 38

## 2 metre temperature (ERA5)

Original GRIB coordinate for key: date(date): 19510701



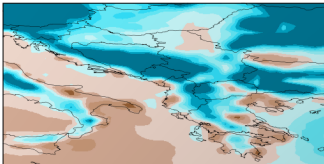
2 metre temperature (Celsius)



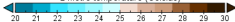
Data Min = -75, Max = 30

## 2 metre temperature (ERA5)

Original GRIB coordinate for key: date(date): 19520701



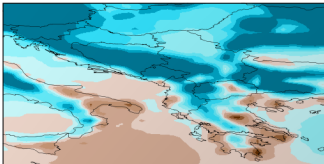
2 metre temperature (Celsius)



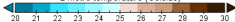
Data Min = -34, Max = 38

## 2 metre temperature (ERA5)

Original GRIB coordinate for key: date(date): 19530701



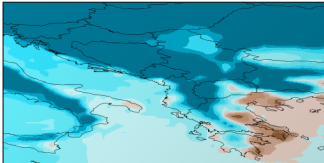
2 metre temperature (Celsius)



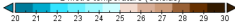
Data Min = -68, Max = 38

## 2 metre temperature (ERA5)

Original GRIB coordinate for key: date(date): 19540701



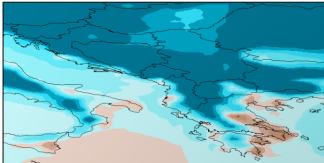
2 metre temperature (Celsius)



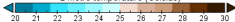
Data Min = -71, Max = 38

## 2 metre temperature (ERA5)

Original GRIB coordinate for key: date(date): 19550701



2 metre temperature (Celsius)

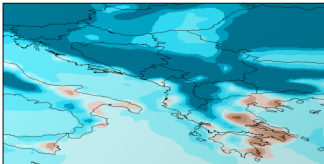


Data Min = -71, Max = 41

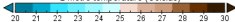


## 2 metre temperature (ERA5)

Original GRIB coordinate for key: date(date): 19560701



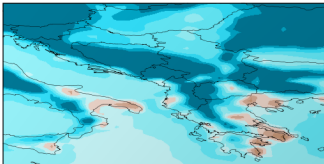
2 metre temperature (Celsius)



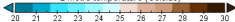
Data Min = -65, Max = 38

## 2 metre temperature (ERA5)

Original GRIB coordinate for key: date(date): 19570701



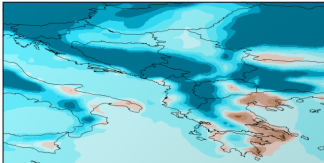
2 metre temperature (Celsius)



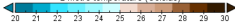
Data Min = -60, Max = 30

## 2 metre temperature (ERA5)

Original GRIB coordinate for key: date(date): 19580701



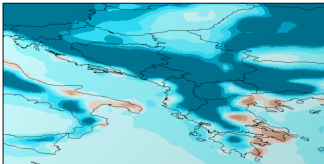
## 2 metre temperature (Celsius)



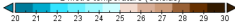
Data Min = -65, Max = 40

## 2 metre temperature (ERA5)

Original GRIB coordinate for key: date(date): 19590701



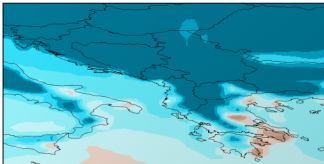
2 metre temperature (Celsius)



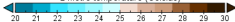
Data Min = -65, Max = 38

## 2 metre temperature (ERA5)

Original GRIB coordinate for key: date(date): 19600701



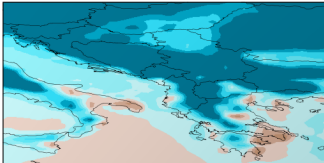
2 metre temperature (Celsius)



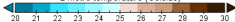
Data Min = -68, Max = 30

## 2 metre temperature (ERA5)

Original GRIB coordinate for key: date(date): 19610701



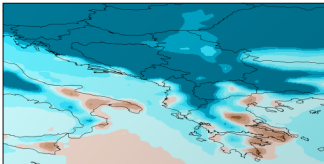
2 metre temperature (Celsius)



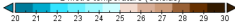
Data Min = -60, Max = 40

## 2 metre temperature (ERA5)

Original GRIB coordinate for key: date(date): 19620701



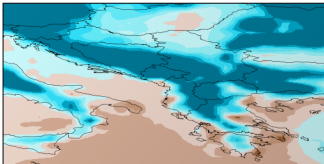
2 metre temperature (Celsius)



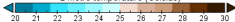
Data Min = -71, Max = 40

## 2 metre temperature (ERA5)

Original GRIB coordinate for key: date(date): 19630701



2 metre temperature (Celsius)

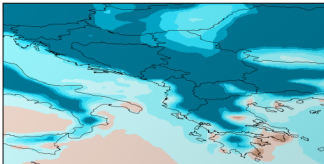


Data Min = -65, Max = 38

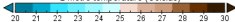


## 2 metre temperature (ERA5)

Original GRIB coordinate for key: date(date): 19640701



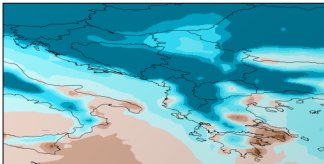
2 metre temperature (Celsius)



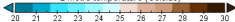
Data Min = -68, Max = 38

## 2 metre temperature (ERA5)

Original GRIB coordinate for key: date(date): 19650701



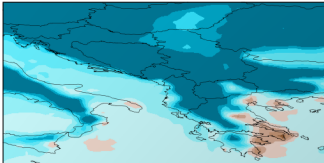
2 metre temperature (Celsius)



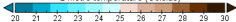
Data Min = -64, Max = 38

## 2 metre temperature (ERA5)

Original GRIB coordinate for key: date(date): 19660701



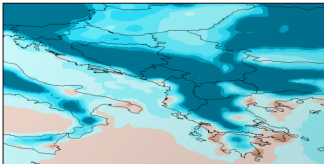
2 metre temperature (Celsius)



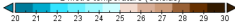
Data Min = -64, Max = 40

## 2 metre temperature (ERA5)

Original GRIB coordinate for key: date(date): 19670701



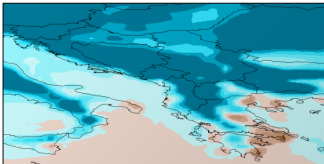
2 metre temperature (Celsius)



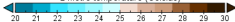
Data Min = -68, Max = 38

## 2 metre temperature (ERA5)

Original GRIB coordinate for key: date(date): 19680701



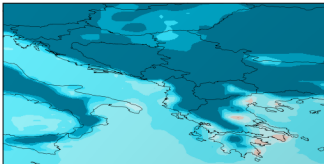
2 metre temperature (Celsius)



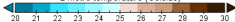
Data Min = -68, Max = 38

## 2 metre temperature (ERA5)

Original GRIB coordinate for key: date(date): 19690701



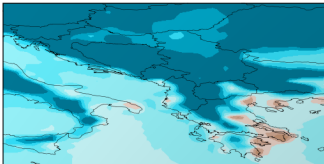
2 metre temperature (Celsius)



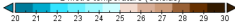
Data Min = -71, Max = 38

## 2 metre temperature (ERA5)

Original GRIB coordinate for key: date(date): 19700701



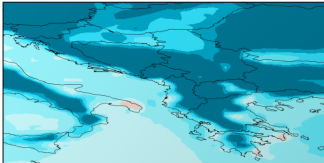
2 metre temperature (Celsius)



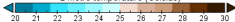
Data Min = -68, Max = 38

## 2 metre temperature (ERA5)

Original GRIB coordinate for key: date(date): 19710701



2 metre temperature (Celsius)

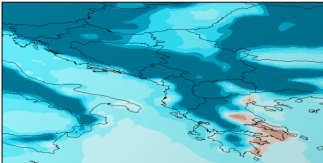


Data Min = -60, Max = 30

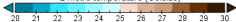


## 2 metre temperature (ERA5)

Original GRIB coordinate for key: date(date): 19720701



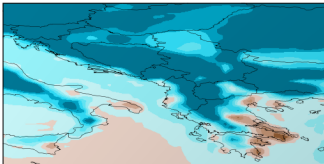
## 2 metre temperature (Celsius)



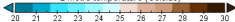
Data Min = -63, Max = 40

## 2 metre temperature (ERA5)

Original GRIB coordinate for key: date(date): 19730701



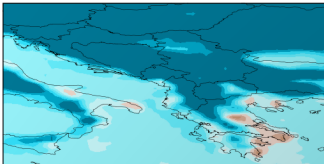
## 2 metre temperature (Celsius)



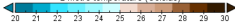
Data Min = -62, Max = 38

## 2 metre temperature (ERA5)

Original GRIB coordinate for key: date(date): 19740701



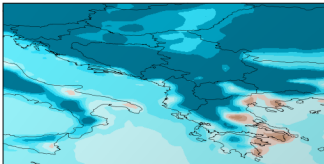
2 metre temperature (Celsius)



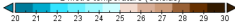
Data Min = -65, Max = 30

## 2 metre temperature (ERA5)

Original GRIB coordinate for key: date(date): 19750701



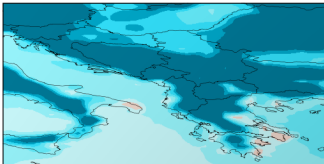
2 metre temperature (Celsius)



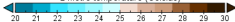
Data Min = -60, Max = 30

## 2 metre temperature (ERA5)

Original GRIB coordinate for key: date(date): 19760701



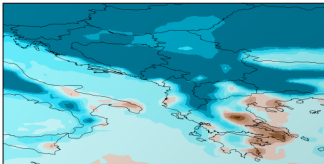
2 metre temperature (Celsius)



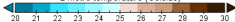
Data Min = -64, Max = 40

## 2 metre temperature (ERA5)

Original GRIB coordinate for key: date(date): 19770701



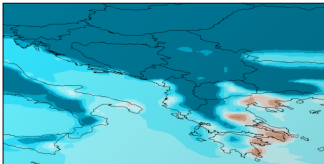
2 metre temperature (Celsius)



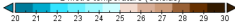
Data Min = -65, Max = 40

## 2 metre temperature (ERA5)

Original GRIB coordinate for key: date(date): 19780701



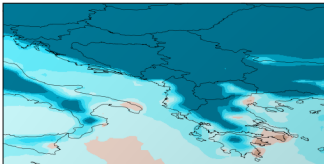
## 2 metre temperature (Celsius)



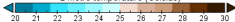
Data Min = -64, Max = 38

## 2 metre temperature (ERA5)

Original GRIB coordinate for key: date(date): 19790701



2 metre temperature (Celsius)

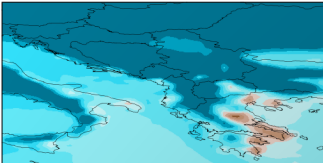


Data Min = -70, Max = 30

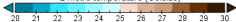


## 2 metre temperature (ERA5)

Original GRIB coordinate for key: date(date): 19800701



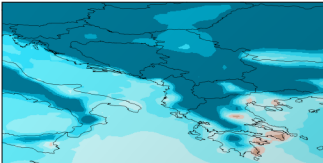
2 metre temperature (Celsius)



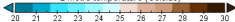
Data Min = -61, Max = 38

## 2 metre temperature (ERA5)

Original GRIB coordinate for key: date(date): 19810701



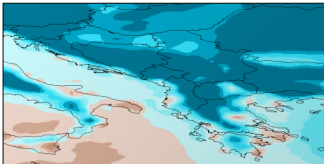
2 metre temperature (Celsius)



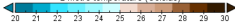
Data Min = -61, Max = 40

## 2 metre temperature (ERA5)

Original GRIB coordinate for key: date(date): 19820701



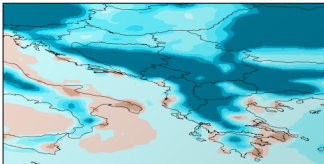
## 2 metre temperature (Celsius)



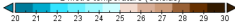
Data Min = -62, Max = 38

## 2 metre temperature (ERA5)

Original GRIB coordinate for key: date(date): 19830701



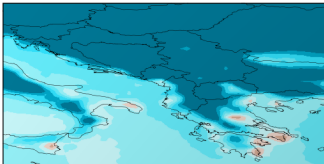
2 metre temperature (Celsius)



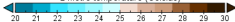
Data Min = -70, Max = 40

## 2 metre temperature (ERA5)

Original GRIB coordinate for key: date(date): 19840701



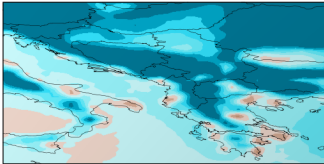
2 metre temperature (Celsius)



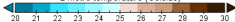
Data Min = -65, Max = 40

## 2 metre temperature (ERA5)

Original GRIB coordinate for key: date(date): 19850701



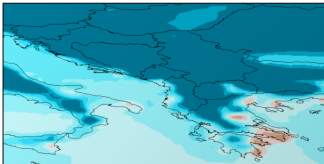
2 metre temperature (Celsius)



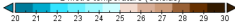
Data Min = -65, Max = 38

## 2 metre temperature (ERA5)

Original GRIB coordinate for key: date(date): 19860701



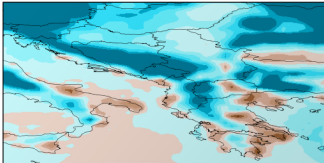
2 metre temperature (Celsius)



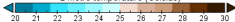
Data Min = -62, Max = 41

## 2 metre temperature (ERA5)

Original GRIB coordinate for key: date(date): 19870701



2 metre temperature (Celsius)

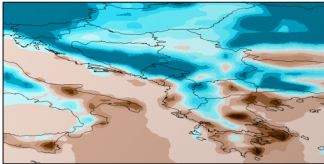


Data Min = -64, Max = 41

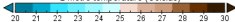


## 2 metre temperature (ERA5)

Original GRIB coordinate for key: date(date): 19880701



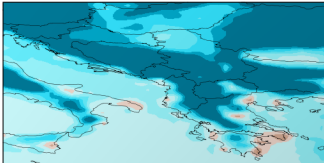
2 metre temperature (Celsius)



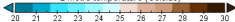
Data Min = -65, Max = 40

## 2 metre temperature (ERA5)

Original GRIB coordinate for key: date(date): 19890701



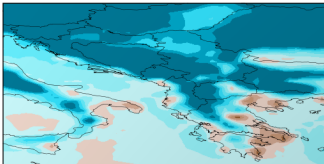
2 metre temperature (Celsius)



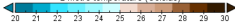
Data Min = -63, Max = 40

## 2 metre temperature (ERA5)

Original GRIB coordinate for key: date(date): 19900701



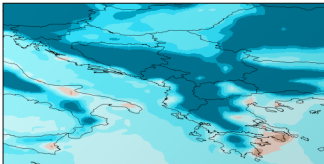
2 metre temperature (Celsius)



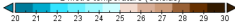
Data Min = -62, Max = 40

## 2 metre temperature (ERA5)

Original GRIB coordinate for key: date(date): 19910701



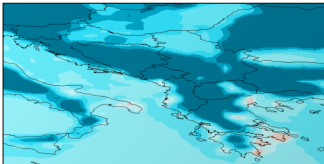
2 metre temperature (Celsius)



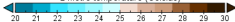
Data Min = -50, Max = 30

## 2 metre temperature (ERA5)

Original GRIB coordinate for key: date(date): 19920701



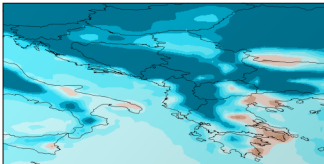
2 metre temperature (Celsius)



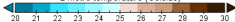
Data Min = -65, Max = 38

## 2 metre temperature (ERA5)

Original GRIB coordinate for key: date(date): 19930701



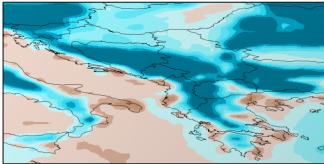
## 2 metre temperature (Celsius)



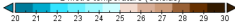
Data Min = -68, Max = 40

## 2 metre temperature (ERA5)

Original GRIB coordinate for key: date(date): 19940701



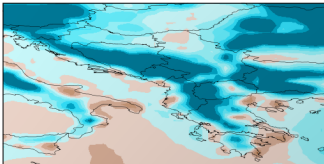
2 metre temperature (Celsius)



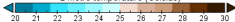
Data Min = -63, Max = 38

## 2 metre temperature (ERA5)

Original GRIB coordinate for key: date(date): 19850701



2 metre temperature (Celsius)

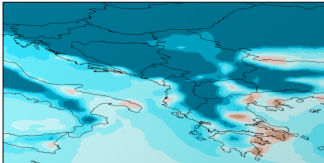


Data Min = -58, Max = 41

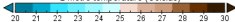


## 2 metre temperature (ERA5)

Original GRIB coordinate for key: date(date): 19960701



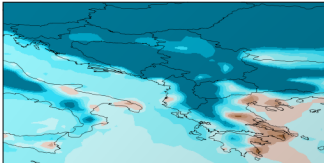
2 metre temperature (Celsius)



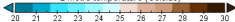
Data Min = -61, Max = 41

## 2 metre temperature (ERA5)

Original GRIB coordinate for key: date(date): 19970701



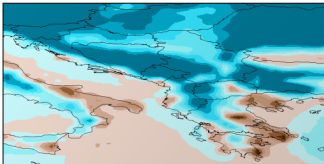
2 metre temperature (Celsius)



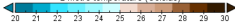
Data Min = -68, Max = 40

## 2 metre temperature (ERA5)

Original GRIB coordinate for key: date(date): 19880701



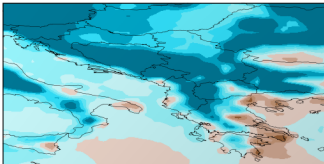
## 2 metre temperature (Celsius)



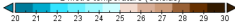
Data Min = -65, Max = 40

## 2 metre temperature (ERA5)

Original GRIB coordinate for key: date(date): 19890701



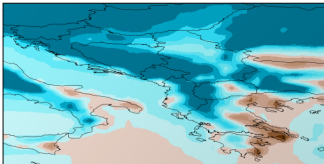
2 metre temperature (Celsius)



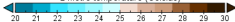
Data Min = -65, Max = 41

## 2 metre temperature (ERA5)

Original GRIB coordinate for key: date(date): 20000701



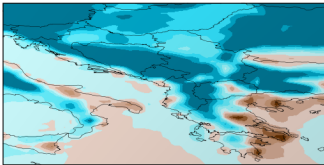
## 2 metre temperature (Celsius)



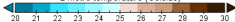
Data Min = -68, Max = 42

## 2 metre temperature (ERA5)

Original GRIB coordinate for key: date(date): 20010701



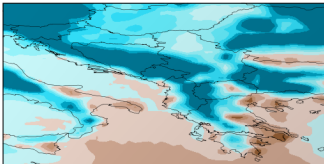
## 2 metre temperature (Celsius)



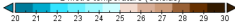
Data Min = -65, Max = 41

## 2 metre temperature (ERA5)

Original GRIB coordinate for key: date(date): 20020701



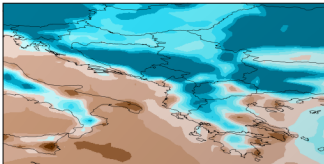
2 metre temperature (Celsius)



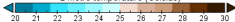
Data Min = -63, Max = 41

## 2 metre temperature (ERA5)

Original GRIB coordinate for key: date(date): 20030701



## 2 metre temperature (Celsius)

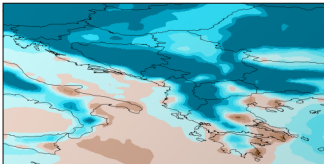


Data Min = -65, Max = 41

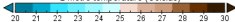


## 2 metre temperature (ERA5)

Original GRIB coordinate for key: date(date): 20040701



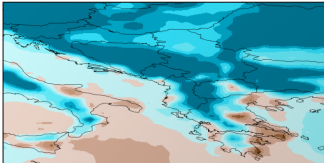
2 metre temperature (Celsius)



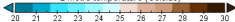
Data Min = -68, Max = 40

## 2 metre temperature (ERA5)

Original GRIB coordinate for key: date(date): 20050701



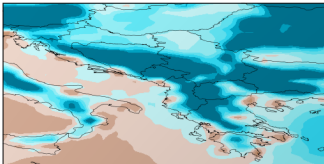
2 metre temperature (Celsius)



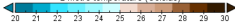
Data Min = -64, Max = 41

## 2 metre temperature (ERA5)

Original GRIB coordinate for key: date(date): 20060701



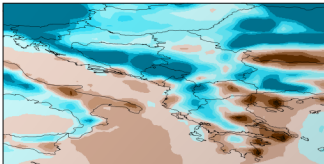
## 2 metre temperature (Celsius)



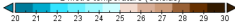
Data Min = -68, Max = 40

## 2 metre temperature (ERA5)

Original GRIB coordinate for key: date(date): 20070701



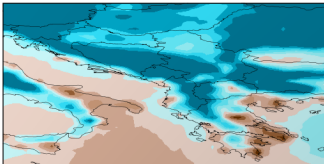
## 2 metre temperature (Celsius)



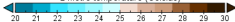
Data Min = -63, Max = 38

## 2 metre temperature (ERA5)

Original GRIB coordinate for key: date(date): 20080701



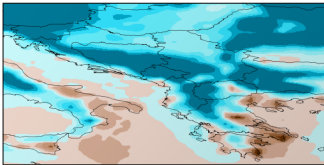
2 metre temperature (Celsius)



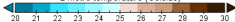
Data Min = -64, Max = 41

## 2 metre temperature (ERA5)

Original GRIB coordinate for key: date(date): 20090701



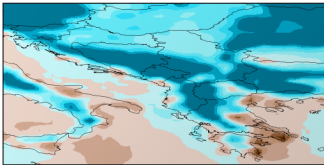
2 metre temperature (Celsius)



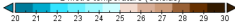
Data Min = -58, Max = 41

## 2 metre temperature (ERA5)

Original GRIB coordinate for key: date(date): 20100701



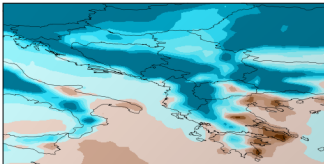
2 metre temperature (Celsius)



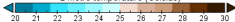
Data Min = -68, Max = 41

## 2 metre temperature (ERA5)

Original GRIB coordinate for key: date(date): 20110701



2 metre temperature (Celsius)

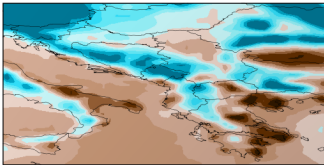


Data Min = -60, Max = 40

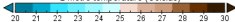


## 2 metre temperature (ERA5)

Original GRIB coordinate for key: date(date): 20120701



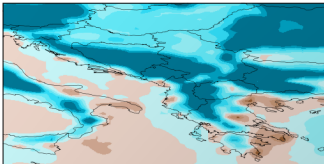
2 metre temperature (Celsius)



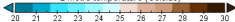
Data Min = -68, Max = 41

## 2 metre temperature (ERA5)

Original GRIB coordinate for key: date(date): 20130701



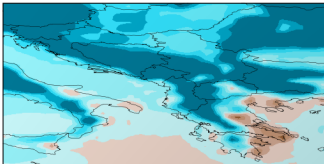
## 2 metre temperature (Celsius)



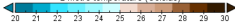
Data Min = -65, Max = 41

## 2 metre temperature (ERA5)

Original GRIB coordinate for key: date(date): 20140701



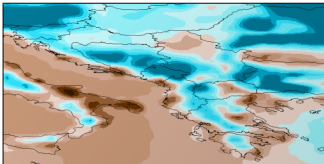
## 2 metre temperature (Celsius)



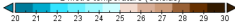
Data Min = -68, Max = 41

## 2 metre temperature (ERA5)

Original GRIB coordinate for key: date(date): 20150701



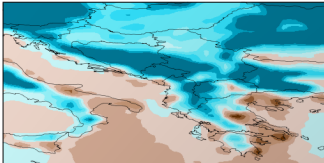
## 2 metre temperature (Celsius)



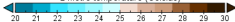
Data Min = -68, Max = 41

## 2 metre temperature (ERA5)

Original GRIB coordinate for key: date(date): 20160701



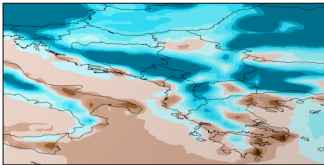
## 2 metre temperature (Celsius)



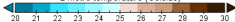
Data Min = -68, Max = 41

## 2 metre temperature (ERA5)

Original GRIB coordinate for key: date(date): 20170701



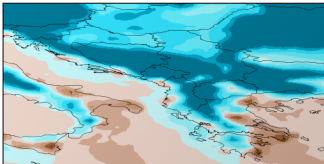
2 metre temperature (Celsius)



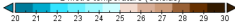
Data Min = -65, Max = 41

## 2 metre temperature (ERA5)

Original GRIB coordinate for key: date(date): 20180701



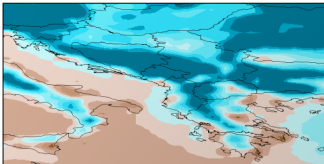
2 metre temperature (Celsius)



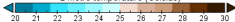
Data Min = -64, Max = 42

## 2 metre temperature (ERA5)

Original GRIB coordinate for key: date(date): 20190701



## 2 metre temperature (Celsius)

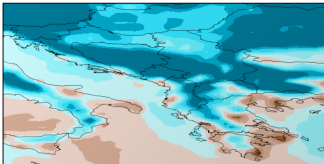


Data Min = -62, Max = 42

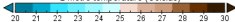


## 2 metre temperature (ERA5)

Original GRIB coordinate for key: date(date): 20200701



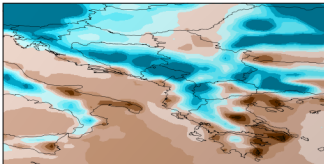
2 metre temperature (Celsius)



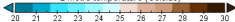
Data Min = -62, Max = 42

## 2 metre temperature (ERA5)

Original GRIB coordinate for key: date(date): 20210701



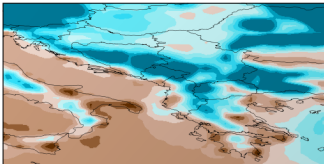
2 metre temperature (Celsius)



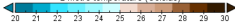
Data Min = -64, Max = 41

## 2 metre temperature (ERA5)

Original GRIB coordinate for key: date(date): 20220701



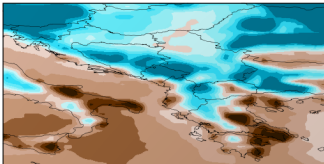
2 metre temperature (Celsius)



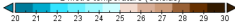
Data Min = -63, Max = 41

## 2 metre temperature (ERA5)

Original GRIB coordinate for key: date(date): 20230701



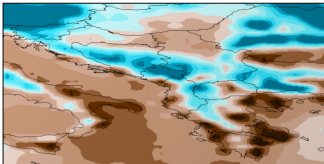
## 2 metre temperature (Celsius)



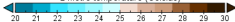
Data Min = -65, Max = 42

## 2 metre temperature (ERA5)

Original GRIB coordinate for key: date(date): 20240701



## 2 metre temperature (Celsius)



Data Min = -85, Max = 43